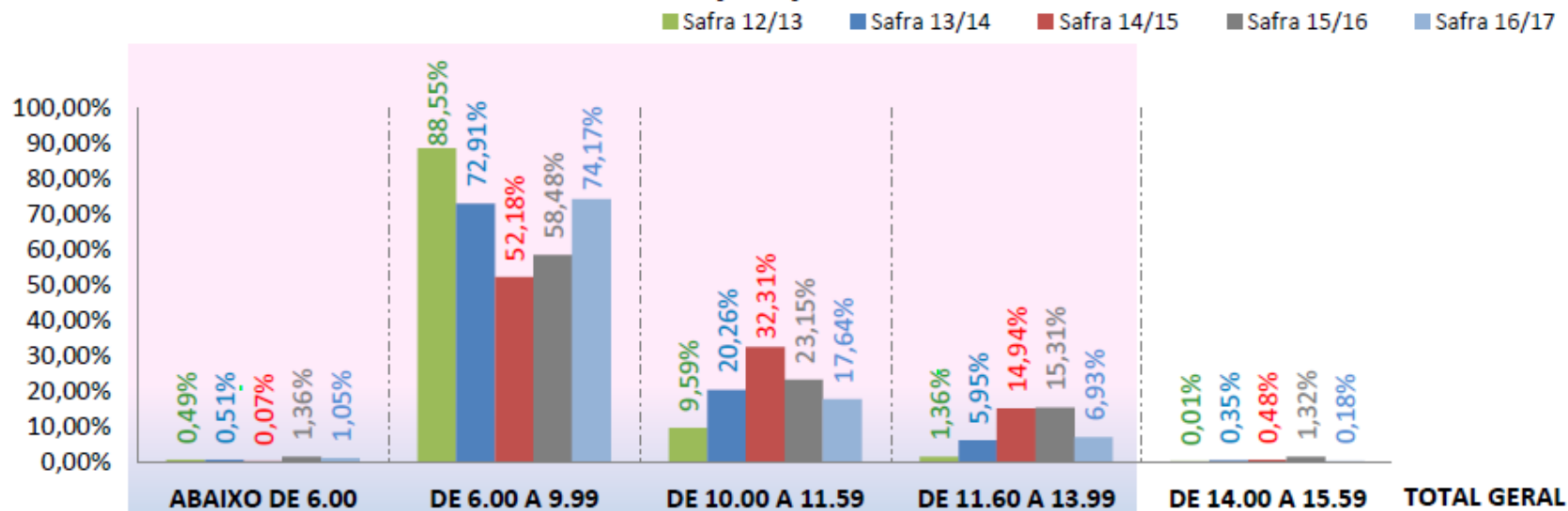


Problema das fibras curtas na indústria

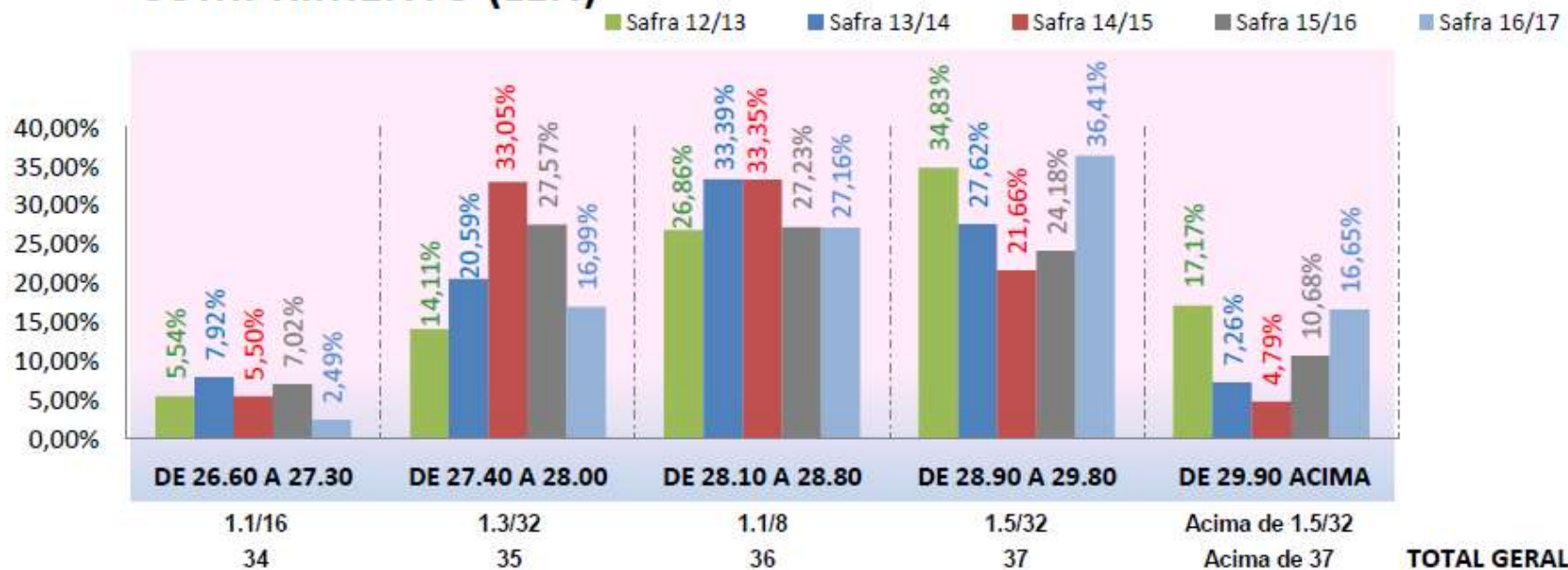
José Edilson O. Andrade

ÍNDICE DE FIBRAS CURTAS (SFI)



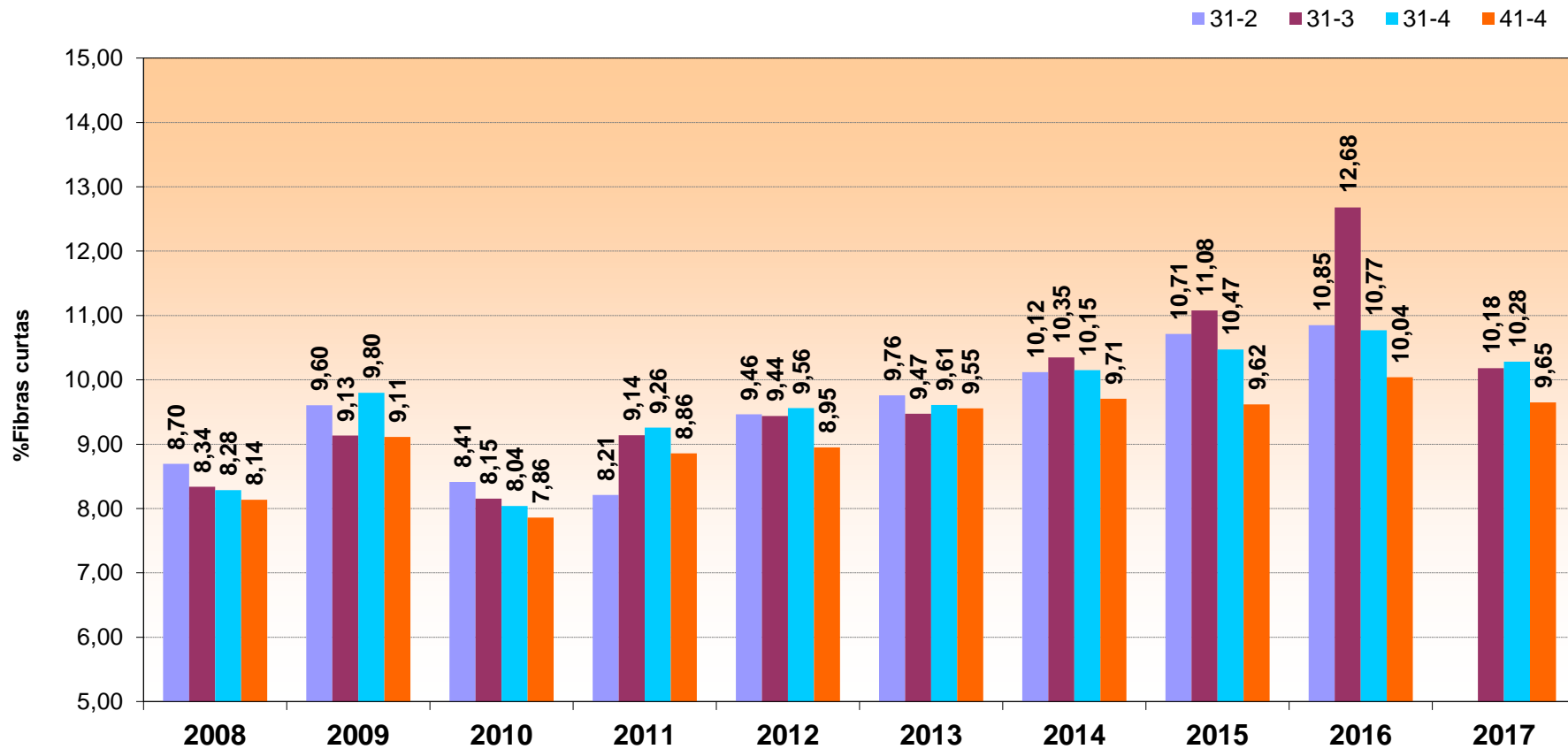
Fardos	Índice de SFI					TOTAL GERAL
	ABAIXO DE 6.00	DE 6.00 A 9.99	DE 10.00 A 11.59	DE 11.60 A 13.99	DE 14.00 A 15.59	
Safra 12/13	4.130	750.146	81.242	11.544	123	847.185
Safra 13/14	5.842	838.598	233.005	68.489	4.052	1.150.249
Safra 14/15	660	497.404	308.035	142.385	4.576	953.322
Safra 15/16	9.349	401.780	159.029	105.167	9.093	687.028
Safra 16/17	5.750	405.300	96.402	37.865	983	546.447

COMPRIMENTO (LEN)



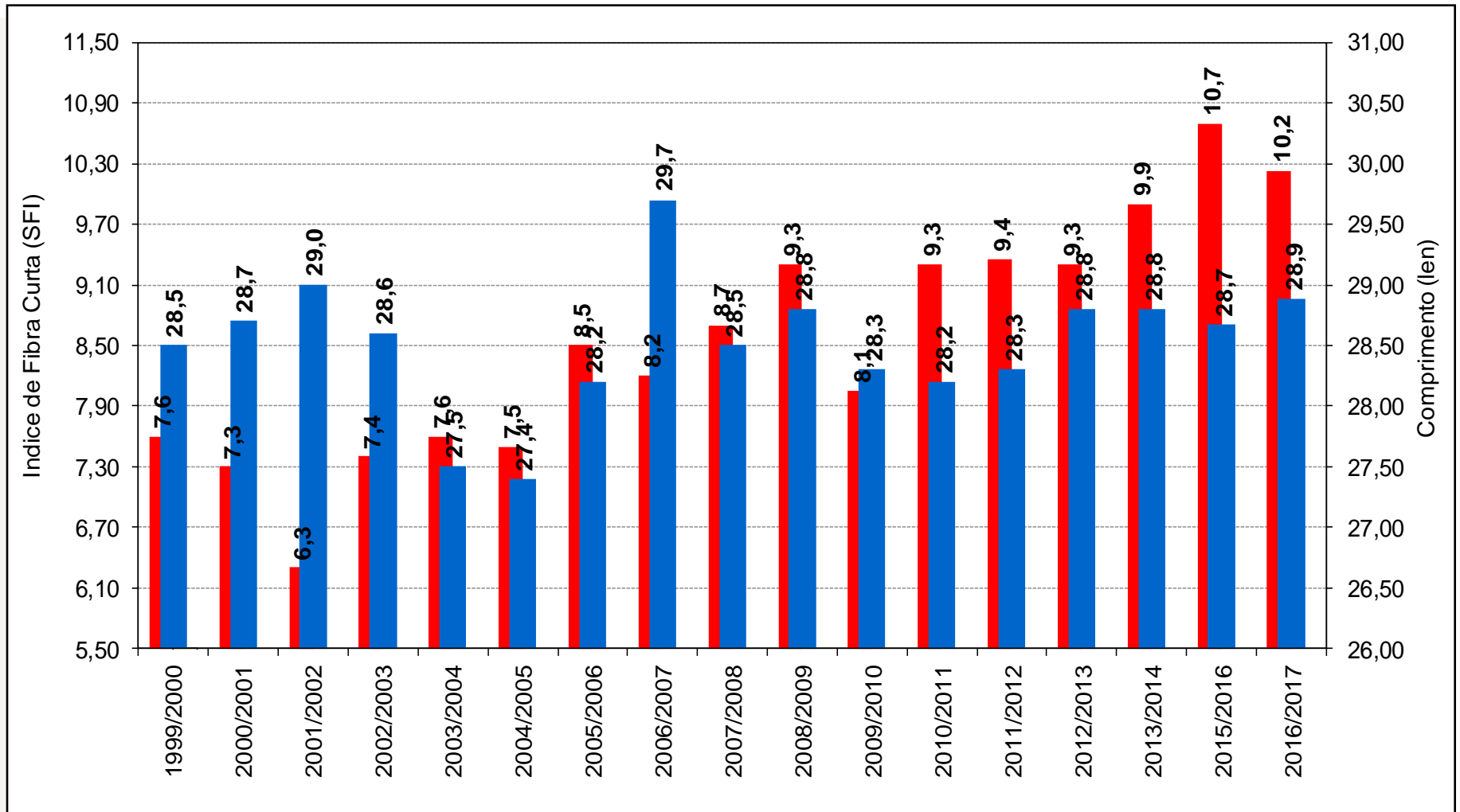
Fardos	DE 26.60 A 27.30		DE 27.40 A 28.00		DE 28.10 A 28.80		DE 28.90 A 29.80		DE 29.90 ACIMA		TOTAL GERAL
	1.1/16	34	1.3/32	35	1.1/8	36	1.5/32	37	Acima de 1.5/32	Acima de 37	
Safra 12/13	46.923		119.528		227.531		295.081		145.420		847.185
Safra 13/14	91.085		236.797		384.016		317.696		83.555		1.150.249
Safra 14/15	52.405		315.109		317.938		206.515		45.703		953.322
Safra 15/16	48.261		189.396		187.110		166.127		73.395		687.028
Safra 16/17	13.601		92.848		148.438		198.961		90.967		546.447

SFI x TIPO POR SAFRA



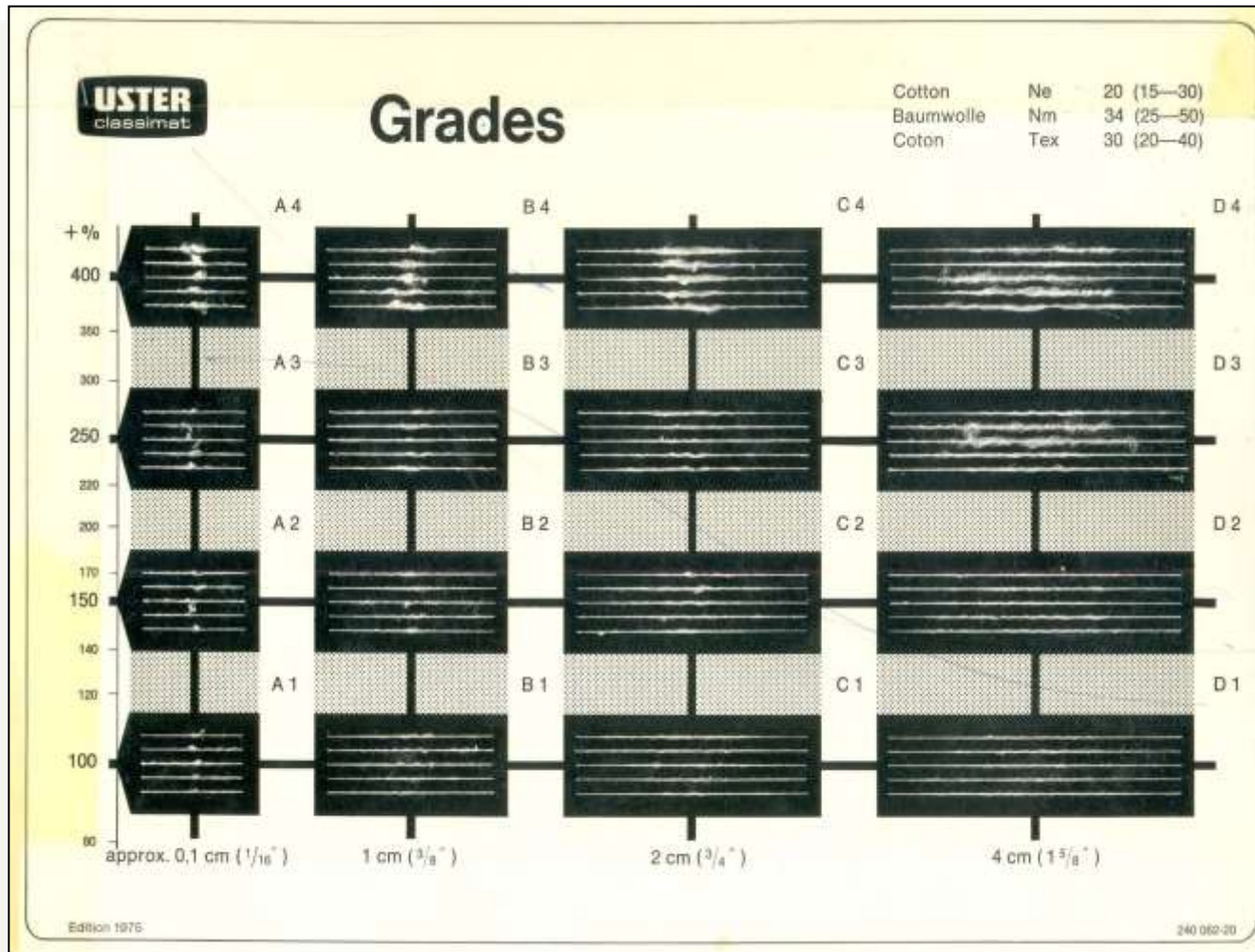
Fonte: Base de dados Coteminas

SFI vs Length



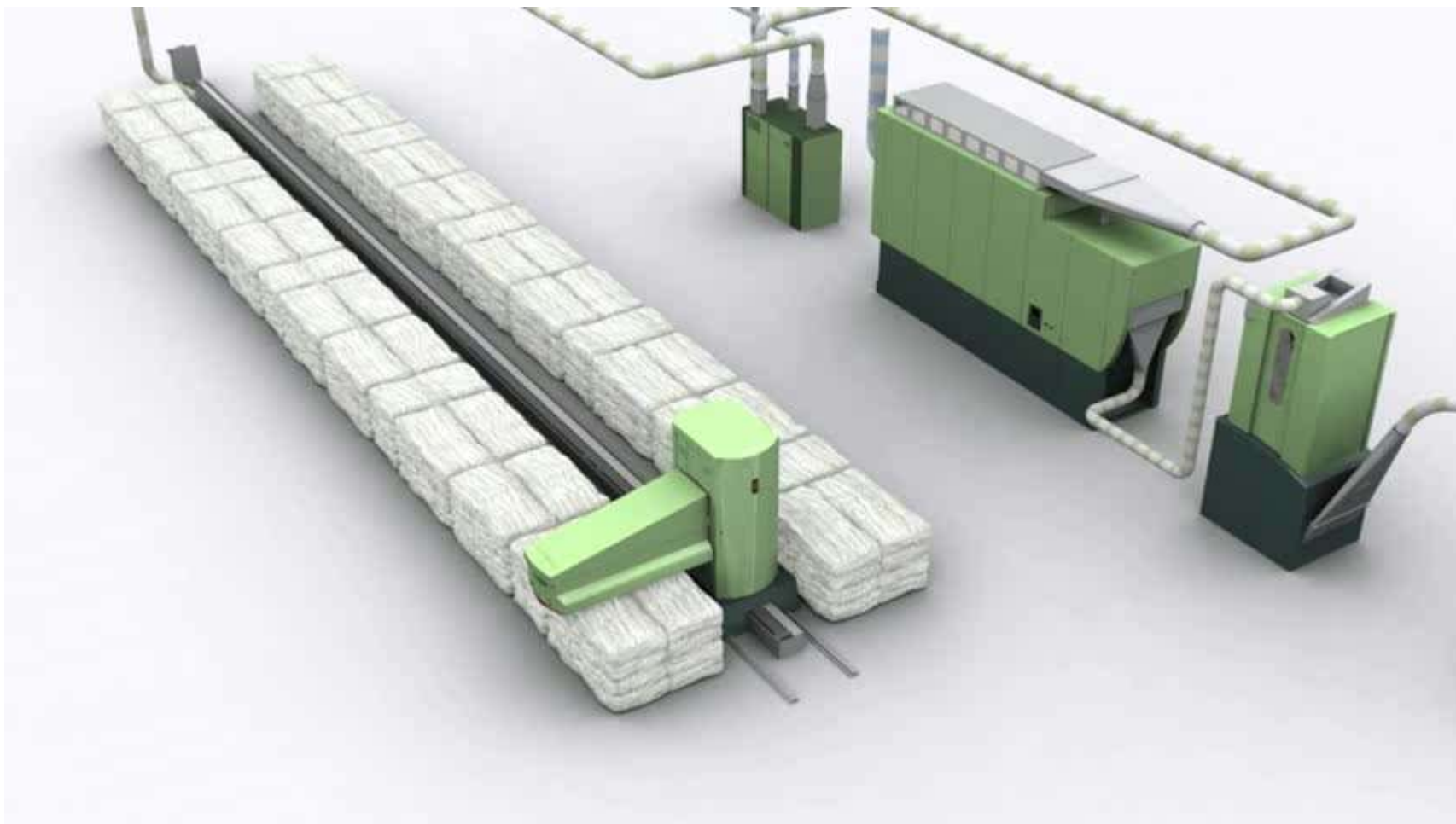
Fonte: Base de dados Coteminas

Classimat



Fonte: Base de dados Coteminas

Abridor de Fardos



Carda



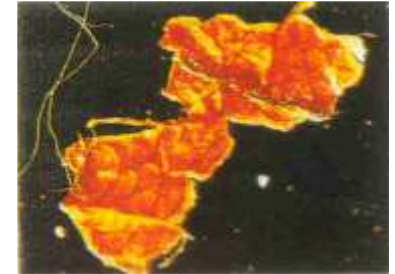
Neps



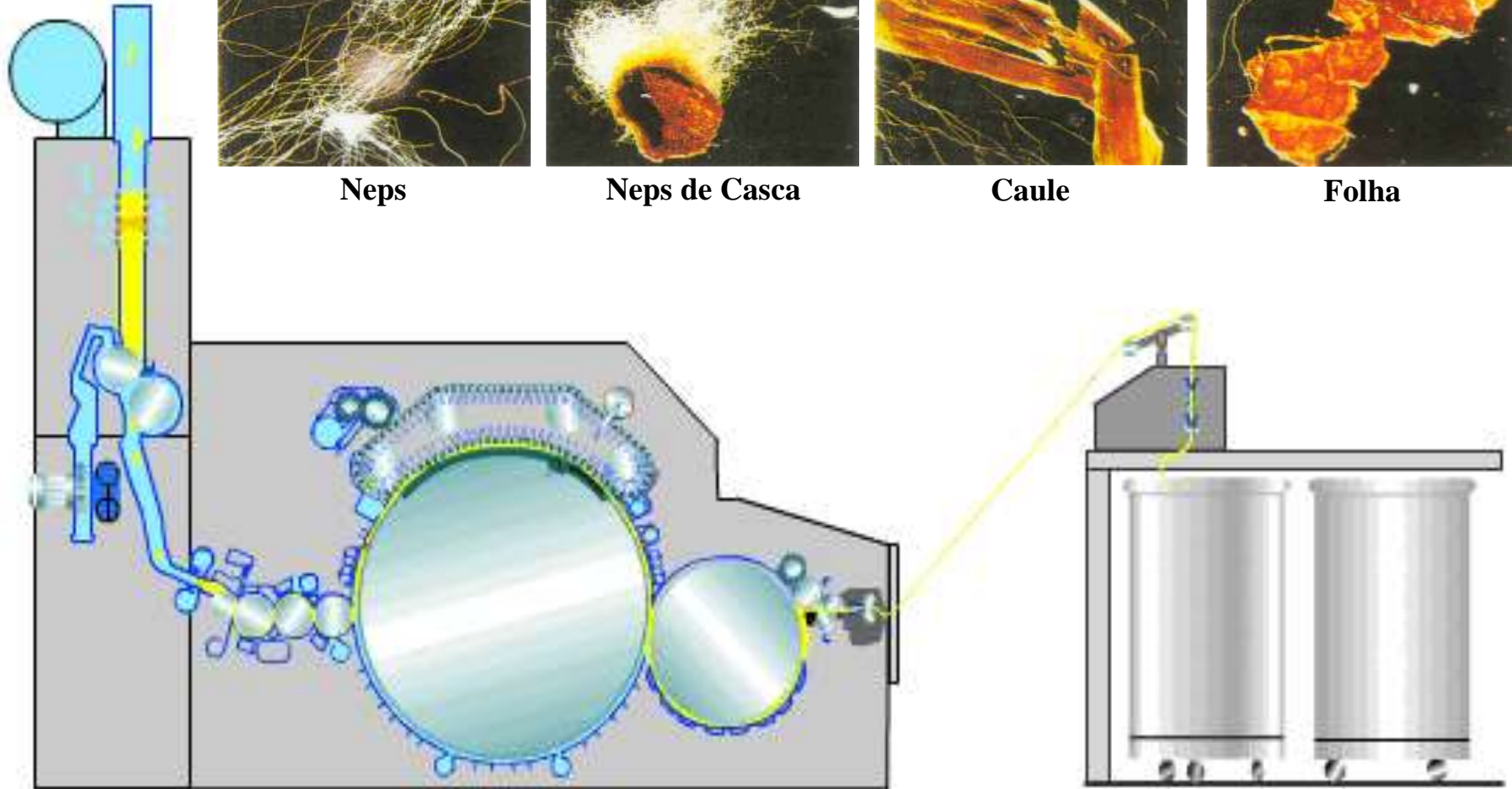
Neps de Casca



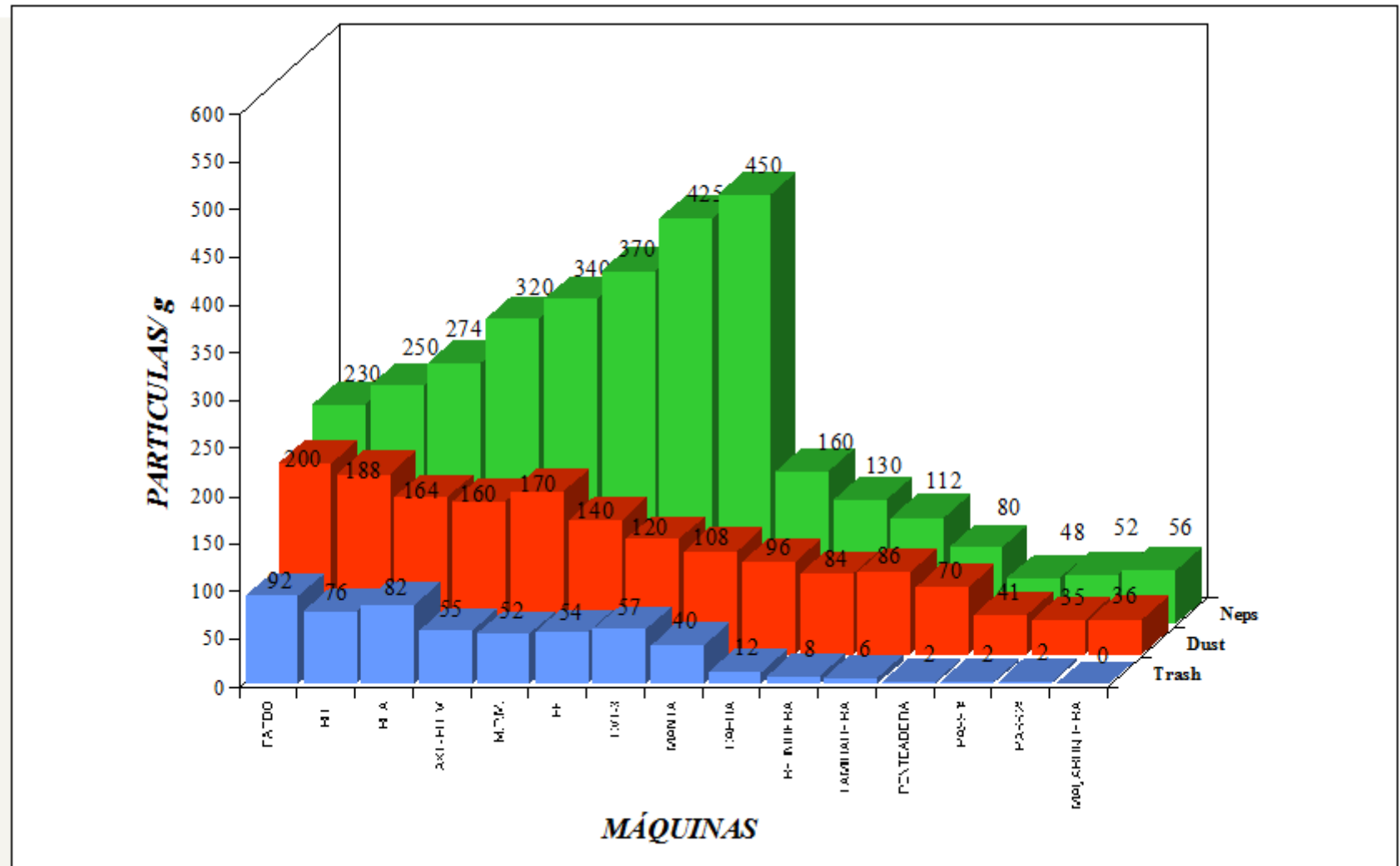
Caule



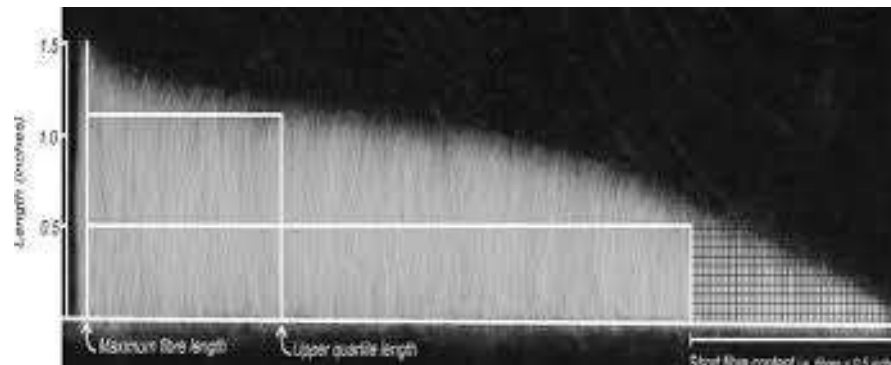
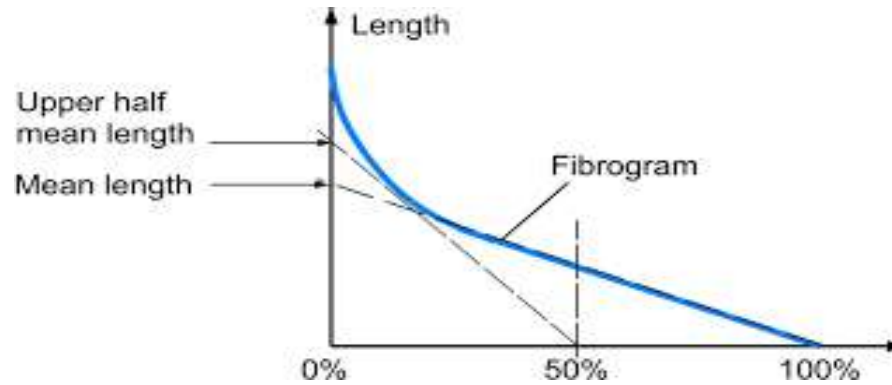
Folha



Processo de Limpeza no Algodão



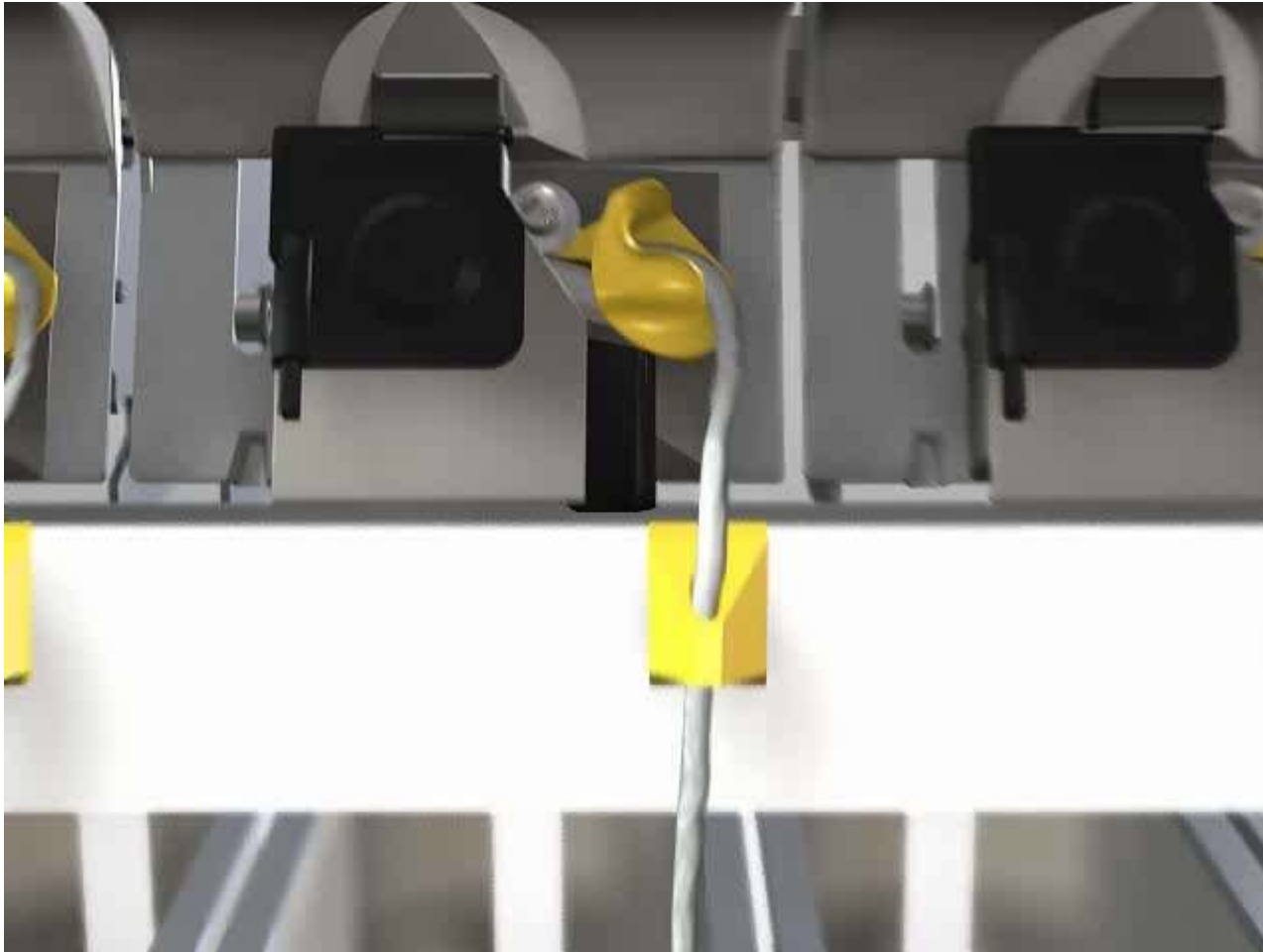
Fibrograma do Algodão



Fiação Open End (Rotor)

Rotor Spinning

Formação do Fio Open End





Obrigado!

José Edilson O. Andrade
edilson.oliveira@coteminas.com.br